



A6

Ultimate Performance, Like Nothing Else

- + Full Digital Beam Forming (DBF), THI Technology with Five Variable Frequency
- + M-Tuning one-key image optimization & Clip-board function
- + 180° transvaginal probe
- + Bi-plane transducers for urological application
- + 1Gb Full patient database: USB 2.0, DICOM3.0, DVD

6Kg

(anti-glare)
12" adjustable LCD



S6

Outstanding Value and Whole Capabilities

- + 15" LCD: 2D, Triplex, Color, Power, PW/CW, HPRF
- + 135° Transvaginal (temperature-detection), Convex, Linear, Phased array, Bi-plane, Transrectal, Endoscopic, Intraoperative
- + Freehand 3D imaging compatible with all transducers
- + 250Gb Full patient database: DICOM3.0, USB2.0, DVD



SSI-6000

High Value for All Applications

- + 17" LCD: TDI, Volume 4D Realtime, 2D, Triplex, Color, Power, PW/HPRF, CW
- + 200° Transvaginal (temperature-detection), Convex, Linear, Phased array, Bi-plane, Transrectal, Endoscopic, Intraoperative, TEE
- + μ -Scan, Multi-beam Technology, Panoramic Imaging
- + Ergonomic LCD Arm direction
- + 250Gb Full patient database: DICOM3.0, 4 USB2.0 Port, DVD

Prime Image Quality & 4D Realtime



Description A6

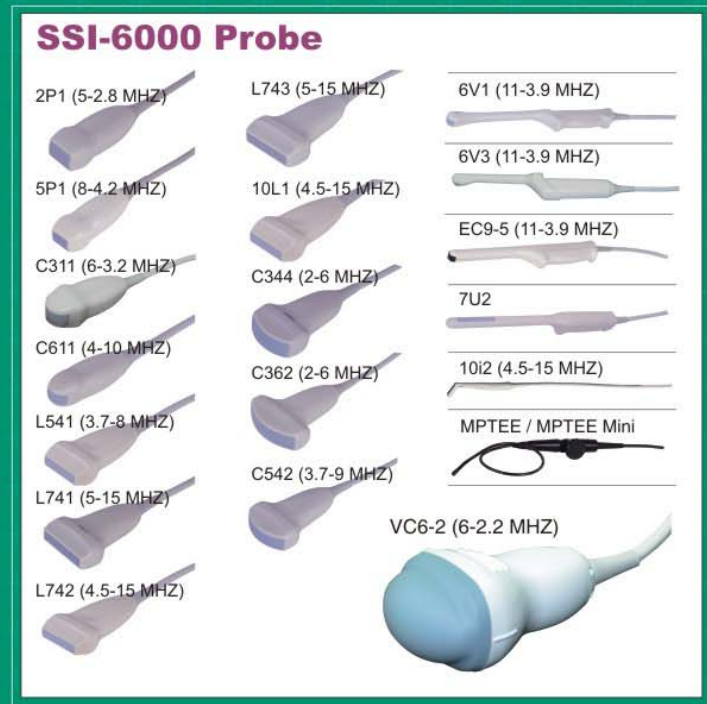
- + Image mode: B, B/B, M, B/M, 4B, THI
- + Transducer freq: Up to 12 MHz/Up to 32cm (depth)
- + Digital technology: Chroma function
- + Pre-processing: 8-segment TGC, DR 158, Image enhancement, Scanning angle, Image rotation at 90 degree interval
- + Post-processing: Gray-map, B/W reverse, Left-right or Up-down reverse
- + Zoom: Read/Write Zoom
- + B-mode: Distance, circumference, area, volume, angle, fetal growth curve, prostate vol
- + M-mode: Distance, time, heart rate
- + Standard two transducer sockets
- + General, Radiology, OB/GYN, Vascular, Urology, Anesthesia, Emergency, ICU, MSK, Pediatric
- + Curved probe(Abdominal, OB/GYN): C351(2-6MHz), C543(3-8MHz)
- + Linear probe (Vascular, Small parts): L745(5-12MHz)
- + Micro-curved probe(Transvaginal): 6V4(4-9MHz)
- + Micro-curved probe(Cardiology): C312(2-5MHz), C612(4-9MHz), EC2(4-9MHz)
- + Built-in high capacity Li-ion battery
- + Needle-guided bracket & Carrying bag
- + Power supply 100-220VAC, 50Hz/60Hz
- + Dimension 340mmX340mmX150mm (LxWxH)

Description S6

- + Hand Carry Unit (HCU) Foldable keyboard system
- + 4D Real-time: Multi Slice, MPR, Clip Plane, Cine Review, Trace Cut
- + Up to 15MHz (depending on transducers)
- + Dynamic range 20-280dB
- + THI Technology with Five Variable Frequency
- + Digital Beam Forming (channels 1024 up to)
- + Two standard transducer sockets & holder build-in
- + Real-time Flow Volume, TDI, CM, Panoramic
- + Steer M-mode with 3 sample lines package
- + ECG Module
- + Linear (Vascular, small parts): L741, 10i2 (Surgery)
- + Curved (Abdomen, OB/GYN): C344, C542
- + Micro-curved (Transvaginal): 6V1
- + Micro-curved (Cardiology): C311, C611
- + Phased Array (Cardiology): 2P1, 5P1
- + 4D Volume probe: VC6-2=6-2.2Mhz/R40mm
- + Built-in high capacity Li-ion battery

Description SSI-6000

- + 4D Volume Real-time: Multi Slice, MPR, Clip Plane, Cine Review, Trace Cut
- + Standard 3D imaging compatible with all transducers
- + Up to 15MHz (depending on transducers)
- + Dynamic range 20-280dB
- + THI Technology with Five Variable Frequency
- + Digital Beam Forming (channels 1024 up to)
- + Backlite keyboard & 10 keys for quick OB Measurement
- + Cinema Review function for quick patient image capture and review
- + Real-time Flow Volume, TDI, CM, Panoramic
- + Steer M-mode with 3 sample lines package
- + Trapezoid 20° on linear transducer
- + Frame Rate 750/sec in B mode
- + M-Tuning one-key image optimization & Clip-board function
- + ECG Module build-in
- + Latest Linear Probe: L752, 15-4.5Mhz/R52mm (256 element)
- + Latest Bi-plane Probe: BCL10-5 (192 element)



ISO 13485



Setia Manggala Abadi

Ultrasound specialist (USG) and Medical equipment supplier
Rukan Kencana Niaga Blok D1/2U & 2T

Jl. Taman Aries, Meruya Utara, Jakarta Barat - 11620
 Telp. (62-21) 58 900 999 (Hunting), Fax. (62-21) 58 901 999

Message Center : 0813 88 999 388, PIN BB Message Center : 26C2AC2C
 email : info@setiamanggalaabadi.com, website : www.setiamanggalaabadi.com

SonoScape China & Sonomed Italy